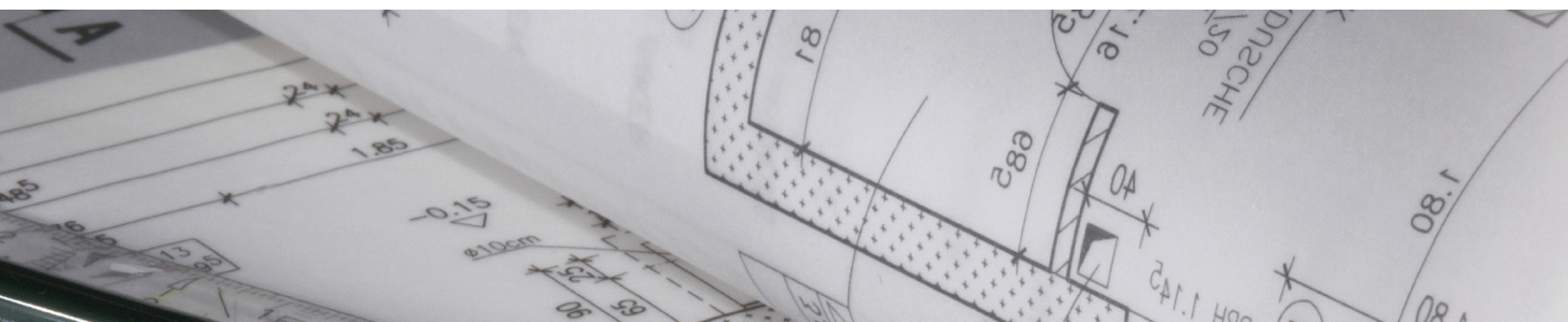




Pentalift Vertical Storing Hydraulic Dock Leveler

Safety, cleanliness, security, convenience and energy savings all in one design



Engineered for Safety

Pentalift vertical storing hydraulic dock leveler features and benefits

High strength, 55,000 psi yield checker plate deck and lip assemblies. Leveler incorporates structural "C" beams or "I" beams for deck supports.

Full width, self-cleaning, heavy wall 70,000 psi yield hinge tube. Gussets on lip and headboard hinge maximize support.

Safer power up and power down operation. Pentalift designs and manufactures it's own double acting cylinder. The deck assembly leans slightly backward with lip extended in stored position.

Hydraulic lip cylinder is designed and built by Pentalift to accurately and reliably control the operation of the lip.

Forklift run-off guards along top sides of deck.

Lockable maintenance strut.

Hydraulic velocity fuse "locks" the deck in the unlikely event of a failure in some hydraulic circuit components.

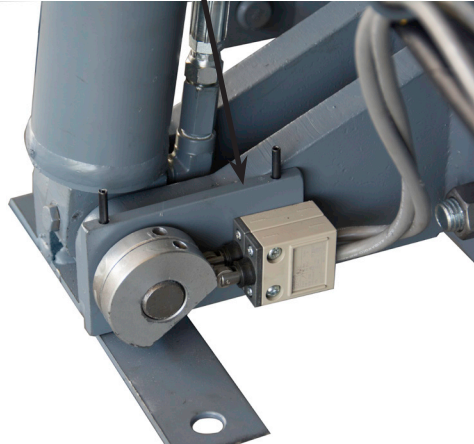
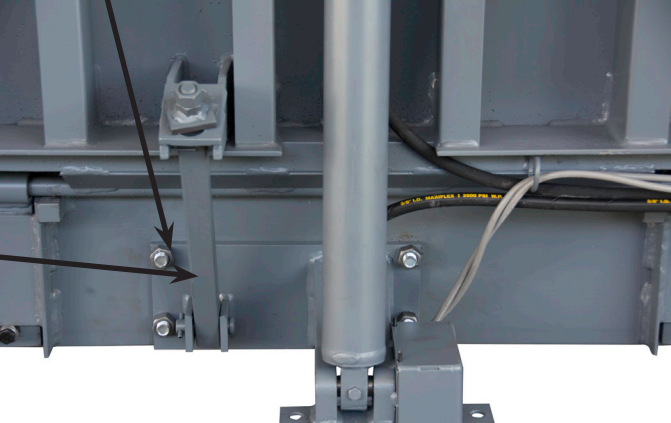
Bolt on cylinder and tilt stop base plate assembly facilitates initial set up at the factory and facilitates fast and easy on site installation set up.

Tilt stop assembly has threaded adjustment on the end for easy and precise setting and adjustment of the vertically "parked" position for the vertical storing dock leveler.

Model HDV6.5635 shown. Quantity and sizes of components and features will vary depending on the model and capacity selected.



Limit switch adjustment is easy to access and simple through the use of cams. A cover (not shown below) protects the switches and cams from debris. The cover lifts off for easy access to the switches and cams.

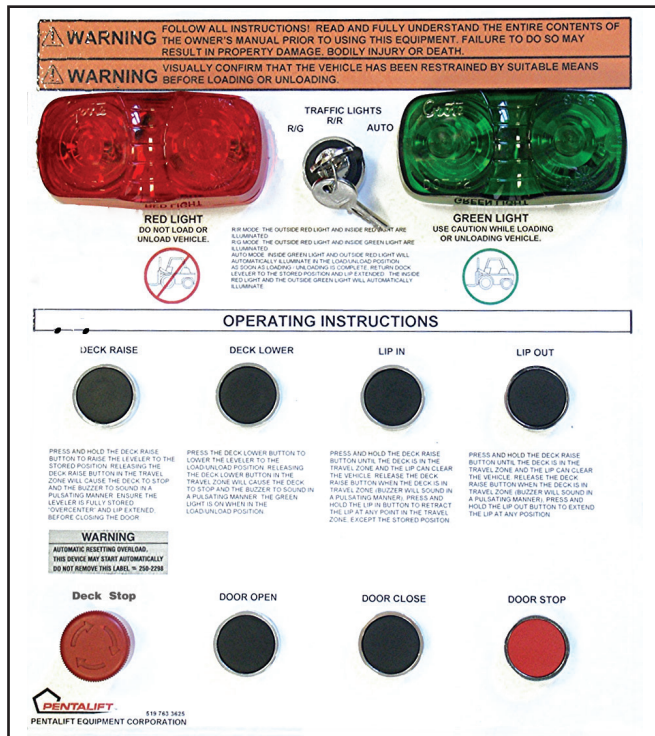


Dock leveler stores vertically for additional benefits

- Stops forklifts from falling off loading dock
- Eliminates door damage
- Stored inside the building for better environment control
- Safe, easy clean pit design
- Safer over center storage design



Safety and performance features:



Pentalift designs and assembles their own control panels to accommodate the interlocking of loading dock equipment such as a vehicle restraint system, overhead door, inflatable dock seal / truck shelter, and other loading dock equipment into one common panel.

- NEMA 12 interior push button control station
- Deck lower, deck raise, deck stop and independent lip control buttons
- Red and green operation LED indicator lights
- Separate lip in/out operation
- Master interlock control panels are available for proper use and sequencing of equipment for simplified operation and increased safety
- Installed on control stanchions away from the pit to allow for easier cleaning and wash down

Hydraulic power system

The hydraulic power unit controls the entire operating sequence of the vertical storing dock leveler. The hydraulic cylinders are manufactured and tested at the factory to ensure that quality standards are met.

- 1 ½ Hp TENV power unit
- Remote mounted away from pit area
- Double acting lift cylinder with independent cylinder to control the lip operation
- Non adjustable valve block controls entire hydraulic operation sequence
- Supplied in different voltages to meet application



Hot dip galvanize finish for corrosion protection and cleanliness

Pentalift vertical storing dock levelers are available with hot dipped galvanized finish for increased corrosion protection and cleanliness.

- The hot galvanized liquid flows onto and protects all surfaces of the components that are dipped creating a coating for the equipment that is far superior to sprayed on coatings
- This option is particularly beneficial in food processing facilities. Control stanchion shown adjacent to dock leveler.



Installation style

There are two main installation styles for vertical storing dock levelers.



Continuous pit / ledge construction

Continuous pit/ledge construction improves dock area cleaning and maintenance and simplifies building design and construction.



Individual pit construction

Individual pit construction allows the space between levelers to be used for storage while still allowing the overhead door to close and seal at the pit floor.

"Our Primary Goal is to engineer and build the best products to ensure the ultimate in user safety and product reliability"

*Paul Pedersen
President
Pentalift Equipment Corporation*

Individual Product Catalogs are available and can also be found on our website.
Pentalift also manufactures a complete line of Lift Tables for your in plant material handling needs.

Note: Some photos may reflect products with optional features. All Pentalift Equipment Corporation products are subject to design improvement through modification without notice.

Pentalift Equipment Corporation
P.O. Box 1060, Guelph, ON N1H 6N1 Canada P.O. Box 1510, Buffalo, NY 14240 – 1510 USA
Phone: (519) 763 3625 Fax: (519) 763 2894
www.pentalift.com

0613D047 Printed in Canada